

CONTENTS

	Side
Installation	2
Buttons	2
Symbols	3
Start up	3
Winding on the line	3
Some explanations	4
Programming	5
Description of programs	6
Normal Fishing	6
Step Jig Fishing	6
Bottom Fishing	7
Bottom Fishing w. step	8
Squid fishing	8
Display texts	9-14
Security lock	15
Errors	15
Maintenance	16
Technical data	17
Accessories	17
Warranty	18
Register A- Z	19

Congratulations, you have made a very good choice of jig fishing machine. Belitronic have developed and manufactured electronic Jig Fishing Machines for more than 27 years. Thousands of machines are used in 56 different countries worldwide. Biggest sales in Norway, Faeroe Islands and Iceland.

DECLARATION

Björn Neuendorf AB, Lunde, Sweden manufactures this machine in accordance with the appropriate EC-directive.

Serial number can be found on a yellow sign outside and beneath the emergency button also at the inside under the gear.

The BJ5000 is a jig-fishing machine and it should not be used for any purpose other than fishing. It is also very important to place the machine so that the EMERGENCY STOP push button is easy to reach should the need arise.

The undersigned gives an assurance that the BJ5000 complies with the stated safety requirements.

The machine must be connected to lead accumulators of 12 or 24 volts. The machine must only be used by persons who have read this operating manual and fully understand the contents.

MOUNTING

Take particular care with both the mechanical and the electrical installations. If you are uncertain, contact authorized personnel for the electrical installation. Always use the shortest possible power supply cable. Avoid cutting the cable, and do not fit unnecessary connectors and junctions.

Press the EMERGENCY STOP push button before connecting the cable to the battery. Connect the power supply cables directly to the battery as follows: Connect both the red leaders to battery (+) positive pole and both the blue leaders to (-) negative battery pole. These connections apply for either 12 or 24 volt systems. Never use any other power source other than regular lead accumulators.

PUSH BUTTONS and SYMBOLS

Twelve push buttons make your fishing more efficient. They are grouped logically and are easy to use.

Z- button **ZERO SET** functions. 1) To zero set the electronic depth counter. 2) In stopped mode; to reset the machine to factory settings by pressing it for approx. five (5) seconds. Very useful if for any reason the machine behaves strangely.

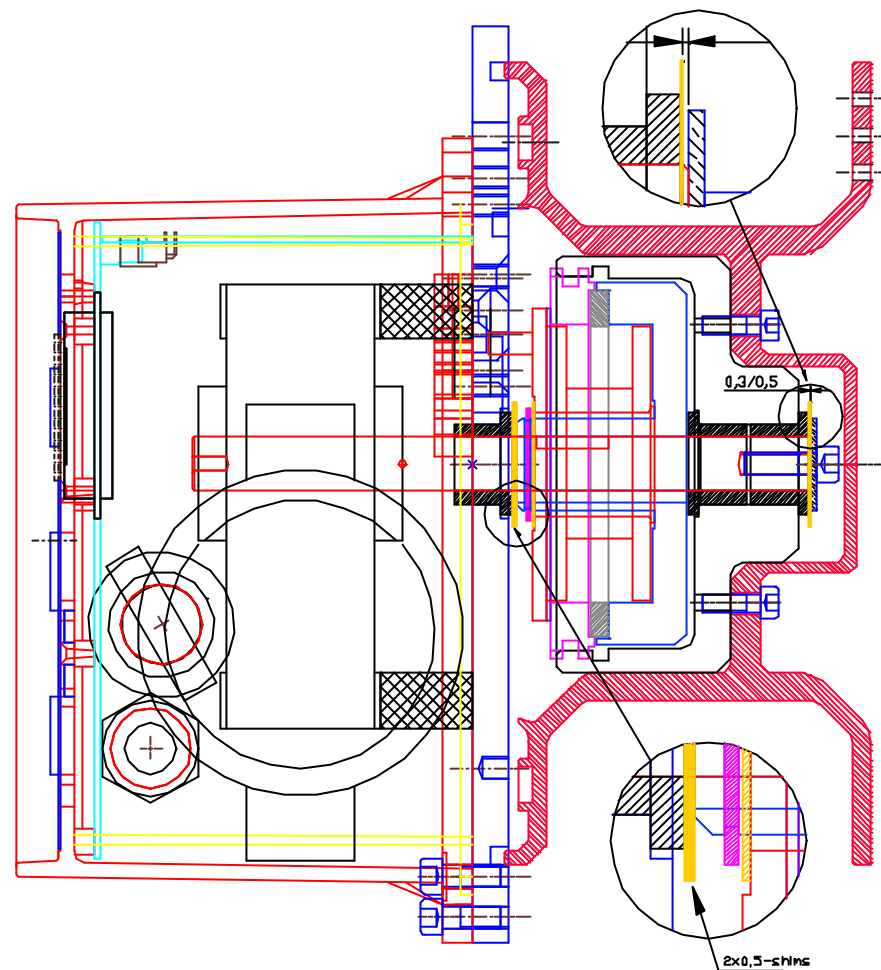
Valid only for values inside parentesene on the side DISPLAY TEXS

P-button **PROGRAM** button is used to enter the programming sequence and to step through the programs.

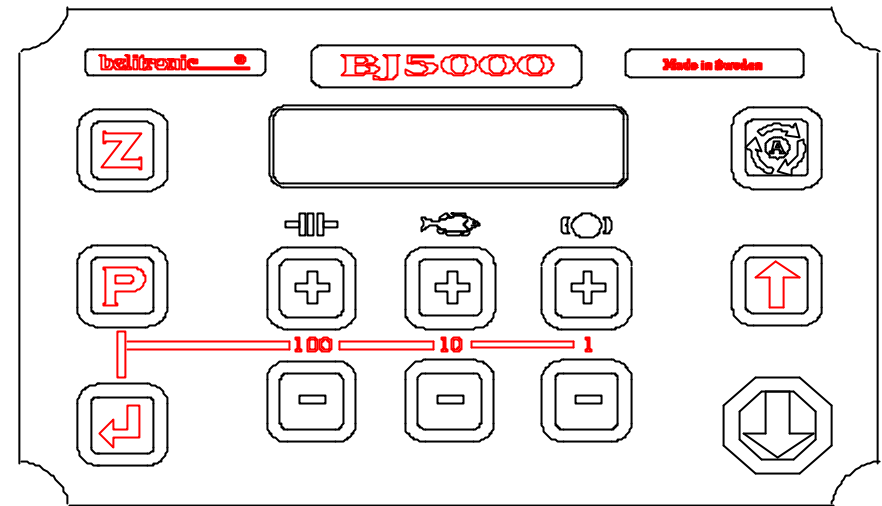
↵- button **"ENTER"** is used to: 1) Enter the first main menu
2) Exit programming.

+/- buttons have triple functions:

1) In normal or fishing mode (AUTO) to increase or decrease values of PULL, CATCH and BRAKE. 2) In programming mode to select on of six items from the main and



Battery warning	15
Beeper (Sounder or Pip)	5
Bottom Fishing	7
Buttons	2
Catch	5
Code	5, 15
Display	5
Display texts	9-14
Enter (↵)	3
Errors	15
Factory settings	4
Free run	4
Info	5
Installation	2
Jig	6
Light	4
Line, Spooling on	4
Low Boat battery	15
Maintenance	16
Memory mess	15
Mess on line	4
More	5
Motor	5
Normal fishing	6
Pause	5
Pip	5
Programming	5
Programs	6
Push buttons	2
Ret	6
Reverse rotation	4
Security lock	15
Speed brake	4, 5
Squid	8
Start	3
Step Jig Fishing	6
Symbols	2
Technical data	17
Warranty	17
Winding on the line	3
Wheel	5



secondary menus. 3) In programming, settings of values. The left pair changes the 100th, the middle pair the 10th finally the right pair the single or 1/10th.

▬▬▬ - symbol means PULL. (Clutch symbol)

⊘ - symbol means BRAKE.

🐟 - symbol means CATCH-sensitivity

A-button START of program = AUTO mode. As long as the button is pressed, the brake is not applied to the wheel, and it can free wheel.

- -button is used to haul in the line manually

NOTE! A slow push on the button will make the motor run but only for as long as the button is kept pushed. .

A very rapid push on the button will make the motor run continuously. Another push on the button will stop the motor.

- **STOP**-button: 1) Stops everything, programs, manual running of the motor, etc.
- 2) BRAKE function as long as it's pressed.

START

Turn on the machine by turning the EMERGENCY STOP push button lightly clockwise until it pops out. The machine is now powered. Watch the display during start up as it provides information from the first few seconds.

NB! If the display is dark; the machine is incorrectly connected to the battery. Switch polarity on the battery

WINDING ON THE LINE

1. Tie the line safely to the wheel. Set PULL to minimum by pushing the - -button under ▬▬▬ - symbol.

2. Push the - -button rapidly. The motor will now run continuously, but without any

power to the wheel.

3. Increase PULL by pressing the + button under the \square - symbol until a smooth pull is applied in the line.

4. When all the line is wound on, press **STOP**-button to stop the machine and then press the **Z**- button to reset the electronic counter.

5. Don't forget to set the correct line diameter and the diameter formed by the outermost turn of line. Measurement of the line will be done under the menus "WHEEL" and "NYLON". To help find the correct diameter of the wheel after the line is wound on, there are some figures on the outside of the wheel i.e., 160,180 and 200. These values are in millimeters. If the outside diameter of the line on the wheel falls in between these numbers, the diameter can be estimated using the figures as a guide.

SOME EXPLANATIONS

Factory settings: Basic program of the machine. Average values are chosen at the factory to enable the machine to work without any further programming. Therefore before you start fishing for the first time only Depth and Jig length have to be set.

Catch and Alarm Beeper (Sounder): A built in beeper sounds when the catch is hooked. When the catch is at the surface a slower beep will sound. Press STOP-button to silence the beeper. The beeper will also sound warnings.

Light: Four built in LEDs signal catches and warnings in conjunction with the sounds of the beeper.

Speed brake: This brake function is activated if the sinker pulls out the line too rapidly. A maximum allowed speed can be set together with the braking power when fishing. Factory settings are 600 rpm, 20% braking power and activating time 1,0 sec.

Fishing Line Tangles (Mess): Sometimes lines from two or more machines become entangled. If the sinker and the hooks are tangled in an other machine and that machine pulls up the lines, the "hooked" machine will normally do nothing and its line will float around in the sea exposed to other lines and hooks. If the "MESS" function is on, the "hooked" machine will register that it has lost the load (sinker and catch) on its line and will automatically wind up the line.

Reverse wheel rotation: It is possible to change the hauling direction of the wheel. Take of the cabinet, swap the cables from the motor on the PC-board. Now the motor will run the other way. To obtain the counter to count the other way, enter the the menu. ζ - WHEEL - COUNTER - P - any of the three + buttons. You will now read "Reverse" in the lower line of the display. Press ζ to exit programming.

PROGRAMMING

Red Push Buttons are used in programming. At delivery, every BJ5000 is pre-programmed (factory set) to work like the previous famous old BJ5. However you can

average during fishing: 2 - 5 A
Operating voltage: 12 - 30 volts
Cable dimension (max 10m): 4*2,5 mm²
Line capacity @ Ø1,4 >500 m

ACCESSORIES

Cover
Pole Ø40*1150 mm Aluminum pipe
Outrigger Ø30*1150 mm Aluminum pipe
Outrigger holder for placing the outrigger on top of machine.
Extra long cable

WARRANTY

- ❖ Guarantee of this machine is one year (two in Nordic countries) from day of purchase, covering production- and material faults. Invoice or receipt is accepted as warranty notes.
- ❖ Substitute machines from local dealer may be available during repair period.
- ❖ During warranty period (1 year) repair is free of charge and afterwards repair is made at fixed prices.
- ❖ Warranty does not cover any assembly, dismantling or transportation costs. Neither damage caused by improper handling or wrong mechanical or electrical installation.
- ❖ Warranty does not cover damage caused by defective or bad batteries or alternators.
- ❖ Warranty does not cover loss of catch.
- ❖ Save the original box if the machine has to be sent to dealer or factory.

We would be more than glad if you write to us and tell about your experience both positive and negative. If you do, please enclose a picture of your boat showing our equipment.

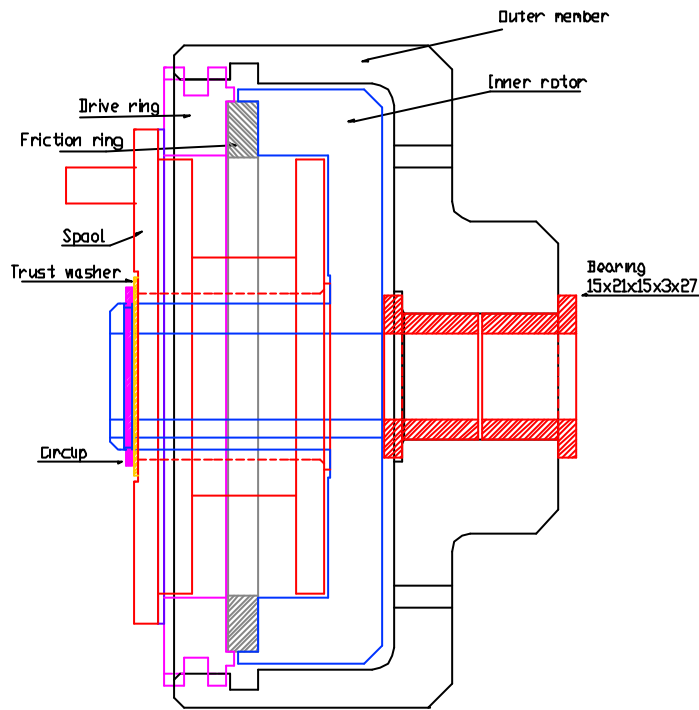
Every year we will premiere one fisherman that has sent us any material regarding our machine.

Register A - Z

Accessories Page
17

a couple of times per year.

If the friction surface is sticky use any solvent. Then use an emery cloth to rub the surface a little.



If the machine needs to be or has been stored and unused for a long periods, clean the clutch and loosen the box.

Also regularly check the value of the humidity. Enter the INFO menu and note the figures. If the value is decreasing, this is an indication that the humidity has increased inside the box. Open and check.

TECHNICAL DATA

Weight:	11,2 kg
Power consumption: max	30 A @ 12 volts
	15 A @ 24 volts

adjust the behavior of your BJ5000 to suit your particular fishing requirements.

The **P**-button provides access to the most necessary functions in each program. More advanced functions will be found under the main-menu which is reached by pushing the \hookrightarrow -button in position "LINE OUT". Pressing the corresponding +/- buttons gives a choice from six different items.

MOTOR: values for accelerations and speeds at jigging, at the instant of catching, when hauling up the catch, during line tangles and when manually hauling in the line.

PAUSE: different pauses in the programs

CATCH: detecting times and sensitivity of catch. The calibrated value can be adjusted. MOTOR PAUS CATCH

WHEEL: Width of wheel. Diameter of the outermost turn and the diameter of the line wound on the wheel. The number of revolutions of the wheel counter. Pulses from sensor. Position for stop 1) at surface with soft stop function or 2) at wheel stop. WHEEL BRAKE MORE

SPEED BRAKE: power, time and speed of brake function. Number of free wheel turns.

MORE: means jump to main menu 2 with more functions.

DISP: contrast, brightness and light time of the display. Language. Viewing time for DRAG - CATCH - BRAKE values after last pushed button.

INFO: information about boat battery voltage measured inside the machine. Temperature and humidity inside the machine. Current measuring on electronic unit and motor. DISP INFO PIP
K0ISE REF

PIP (sound) at button pushing, at catch and when catch at surface.

EXTRA: choice of extra equipment.

CODE: security locking code system.

RET: Return to main menu no. 1.

After one of the main functions above has been selected, use the P-button to scroll. Use the \hookleftarrow -button to exit to normal menu "LINE OUT".

PROGRAM DESCRIPTION

The BJ5000 has five basic programs.

* Normal jig fishing (N)

* Step Jig (S)

- * Bottom fishing (B)
- * Bottom fishing w. Step Jig (BS)
- * Squid fishing (Sq)

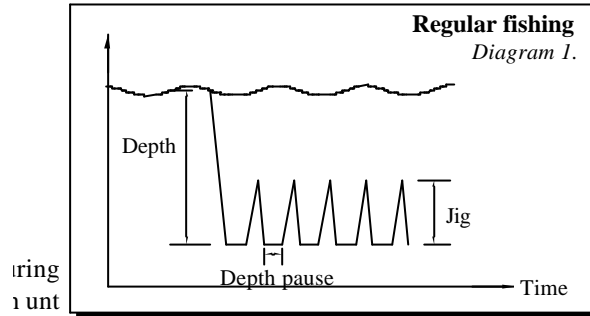
Every program is built up by steps and a more detailed description of each program and its contents follows.

NORMAL JIG FISHING

Normal fishing (N)

The simplest of the programs. See diagram 1. Built up by three main sequences:

1. **Depth** the fishing depth the machine will work at.
2. **Jig** is the amplitude i.e., the depth range of the up and down movement of the lures.



ishing”

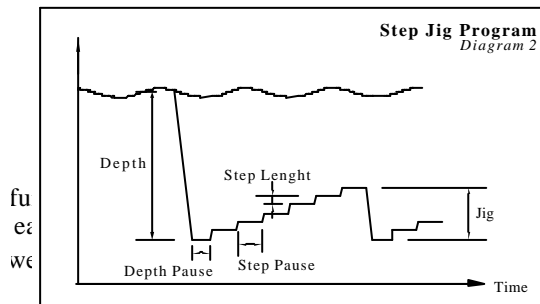
1. Push the **P**-button to go into the programming mode check that display shows "Fish method (N)" in upper row and "Normal fishing" in the lower. If not, change by using the +/- buttons.
2. Push the **P**-button once more and adjust the fishing depth by pressing the +/- buttons. All six buttons can be used. The left ones for 100-settings, the middle for 10-settings and the right for 1-settings.
3. Push the **P**-button again select "Jig length".

In the following diagrams you can see a picture, as it would appear in your echo sounder, of the movement of the sinker during fishing

STEP JIG FISHING

Step Jig Fishing (S)

Basically this is the same as the regular fishing method, but the Jig length is divided up into steps and between each step there is a pause. Diagram 2 shows the picture of the echo



When locked there will be only three tries to open it. Then the battery cable must be disconnected from the battery for more than one minute before three more tries can be attempted

1) Activate at: "Power up"

The machine will be locked as soon as the emergency push button is pressed. Obviously it will be locked when the power is disconnected from the machine.

2) Activate at: "Battery disconnected"

The machine will only be locked when the power cable is disconnected from the battery or if the boat battery voltage drops very low.

To de-activate the locking functions choose "Never" from the "CODE MENU".

The personal code is set as follows:

Push the **⏏** button to enter the MAIN-MENU 1. Choose "MORE" to get the next MAIN-MENU 2 and choose "CODE". Select with the +/- buttons of BRAKE locking method according to your wishes. Push the **P**-button to select a personal code. Use the +/- buttons of BRAKE to change the figures and the +/- buttons and of CATCH to select position (move sideways). When the correct code is found press the **P**-button to confirm and the **⏏**-button to exit.

When the machine is turned on and the code lock is activated the display shows CODE? Press the **P**-button and enter the code and press the **P**-button to confirm.

ERRORS

Battery warning

The machine continuously measures the supply voltage and signals an alarm if it drops below the following voltages:

10 volts in a 12-volt system

15 volts in a 24-volt system.

Insufficient voltage might be caused by bad connectors, bad or damaged cables loss of charging equipment or similar.

Memory mess

The built in memory has some bad information in some cells. Press the **⏏**-button to proceed. Factory set values will be written into the memory.

Humidity

Open the case and check whether there is water in it or not. If it is necessary to dry it out, use a hair dryer to remove as much moisture as possible

MAINTENANCE

The machine does normally not require any maintenance. The clutch is somewhat exposed to water and outside pollution. To ensure a perfectly functioning clutch, clean it

Pictures	Min	Max	Fact.	Step	Notes
LOW BOAT BATTERY Push button ↘	Read only			WARNING	CHECK THE BATTERY SYSTEM! A warning. There might be some mess data in any memory cells. Push the ↘ button. Factory set will be done.
MEMORY MESS Push button ↘	Read only				Second picture from start up, showing program version and boat voltage system.
Version X.X System XXV	Read only				Third picture showing serial number appears at start up.
Serie No: XXXXXX	Read only				This information is given if the wheel stops outside the selected fishing depth, or outside maximum set depth in Bottom program.
Overload !					

SECURITY LOCK

The machine is equipped with locking system. The lock can be activated in two ways. 1) When the machine is turned off by the Emergency breaker or, 2) when the battery cable is disconnected.

Programming Step Jig Fishing

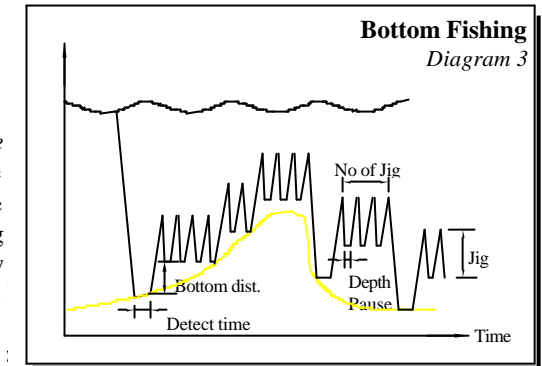
1. Push the **P**-button to enter the programming mode. Select the program by using the right +/- -buttons. Read "Fish method (S)" in the upper row and "Step fishing" in the lower row of the display.
2. Push the **P**-button again and select "Depth"
3. Select "Jig length".
4. Decide the "Step length".
5. Select "Step pause".

BOTTOM FISHING

Bottom Fishing (B)

Means fishing close to bottom. See diagram 3. The machine will hold the sinker close to the bottom even if the depth changes over time. Fishing depth can be chosen. Three new functions is added to this program:

1. **Detect time** is the time the machine takes to recognize the bottom. It is equal to the time the wheel makes onezses this as a sign that the sinker has reached the bottom. Immediately it starts winding up the total of the length of **BOTTOM DIST.** + **JIG LENGTH**.
2. **Bottom dist.** is the depth at which the fishing shall be undertaken over the bottom.
3. **No of jigs**. This is the number of jigs that the machine will make before it will try to find the bottom again.



Programming the Bottom Fishing Program

1. Press "P" once and select fish method "Bottom fishing (B)".
2. Press "P" again and select "Jig".
3. Press "P" again and decide "Detect time".
4. Press "P" again and decide "Bottom dist.".
5. Press "P" again and select "No. jigs".

BOTTOM FISHING WITH STEP JIG

Bottom fishing and step (BS)

A combination of bottom fishing and step jig fishing program. Two new functions are

added to the regular bottom-fishing program: "Step Jig Length" and "Step Jig Pause".

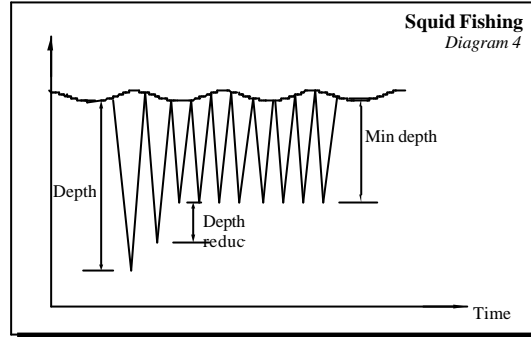
SQUID FISHING

Squid fishing (Sq)

See diagram 4.

The program is built up of four components.

1. **Depth** is the first (start) depth the machine is selected to fish at.
2. **Depth reduc.** is the reduction of depth the machine makes every time the line is paid out until -
3. **Min.depth** is reached. The machine will continue to fish at this



is set to 30 fathoms, following happens when the program is started: 50 fathoms of line are reeled out. Clutch is activated and the machine starts to haul in all the 50 fathoms. All line and lures are wound up on the wheel and the line is reeled out again, but this time to 50-5=45 fathoms. Line is reeled in and next time it is goes out it will go out to 40 fathoms and so on two more times until the "Min.depth" (30) will take over. The machine will then fish at depth of 30 fathoms. If the STOP button or START button is pressed, the machine will start fishing from 50 again.

4. **Square wheel** is special function for squid fishing. When it is activated, the motor will run intermittently i.e., it will alternate between two different speeds, SPEED 1 and SPEED 2, to simulate the motion of the line being wound up on a square wheel. This intermittent hauling of the line is best fishing method for catching squid. The varying of the motor speed automatically switched off when many squid are on the hooks.

Programming Squid Fishing

- 1 Push the "P"-button to select "Fish program Sq". "Squid fishing" shall appear in the lower row of the display.
- 2 Push the "P"-button again and select "Depth".
- 3 Push the "P"-button and select "Depth reduc".
- 4 Push the "P"-button and select "Min.depth".
- 5 Push the "P"-button and select "Square wheel" on or off. If on:
- 6 Push the "P"-button and select "Speed 1".
- 7 Push the "P"-button and select "Speed 2".

DISPLAY TEXTS

Pictures	Min	Max	Fact.	Step	Notes
INFORMATION Humidity XXX	0	99	30	1	and open box and check for leakage. Settable limit for humidity. If exceeded, alarm will be raised by sound and light.
Alarm limit humidity XX%	Read only				Allowable humidity limit inside the box is exceeded. Acknowledge by pressing ζ . If the alarm goes on for the second time, the box must be opened, checked and cleaned.
ALARM! HUMIDITY LIMIT EXEDED!	Read only				Shows the motor current.
INFORMATION Motor (Amp) XX	OUT	IN	IN		Beep 'on' or 'off', at button pressing.
PIP AT BUTTONS XXX	OUT	99	30	1	Select how many beeps at catch.
PIP AT CATCH No XX	2	60	5	1	Select the pause between every single beep when the catch is at the surface.
PIP AT SURFACE No X.X	Aldri	Batt	Påslag		Select when security code shall be activated. Never - At Power up - If battery has been disconnected.
CODE AT. XXXX	0000000	999999			Select a personal code. Six digits.
CODE ? XXXXXh XXXXXX	0	100	18	2	Bars shown when any of the +/- DRAG-buttons are pressed. Amp shows the actual current of the motor.
-----<Drag -----<Amp	0	50	7	1	Shown when any of the Catch-buttons are pressed. One unit = 1 ampere.
-----<Catch -----<Amp	0	100	30	2	Shown when any of the Brake-buttons are pushed.
-----<Brake -----<Amp	Read only				First picture that appears when the machine is turned on, or when the Z-button is pressed 5 sec. for reset.
belitronic's BJ500X	Read only				Second picture witch appears if the Z-button is pressed for more then 5 seconds.
Factory set values	Read only				Show at which depth the catch was detected. Is shown altered with the Depth counter.
Catch depth XXX	Read only	WARNING			A warning. Boat battery is bad or other malfunction of electrical system.

Pictures	Min	Max	Fact.	Step	Notes
Soft stop at 0 in manu XX	0	20	5	1	ulses in 12 volt system. One unit = 6ms.
RP-card T1 @ 12V XXX	0	5	2	1	Length of demagnetizing pulses in 12 volt system. One unit = 0,1s.
RP-card T2 @ 12V XXX	0	999	200	1	Number of demagnetizing pulses in 12 volt system.
RP-card Puls @ 12V XXX	0	20	2	1	Pauses between demagnetizing pulses in 24 volt system. One unit = 6ms.
RP-card T1 @ 24V XXX	0	5	2	1	Length of demagnetizing pulses in 24 volt system. One unit = 0,1s.
RP-card T2 @ 24V XXX	0,1	100	20	1	Number of demagnetizing pulses in 24 volt system.
RP-card Puls @ 24V XXX	0,1	5,0	1,0	0,1	Brake power to obtain a speed limit of outpaying line.
SPEED LIMIT Brake Power XX%	50	900	400	1	Time for brake to be activated if speed exceed stipulated MAX SPEED.
SPEED LIMIT Brake time X.X	50	900	400	1	Max speed on paying out line. Used to avoid backlash on the line.
SPEED LIMIT Max speed XXX	0	100	70	1	Menu obtained when MORE is selected from the MAIN MENU.
DISP INFO PIP CODE RET	0	100	80	1	Display contrast can be adjusted for best viewing angle.
DISPLAY Contrast XX%	Ut	INN	INN	0,1	Intensity of back light in display.
DISPLAY Brightness XX%	Ut	INN	INN	0,1	Time for background light to be on after last pushed button.
DISPLAY Light time XX.X	0,5	20	4,0	0,1	Select language.
DISPLAY Language English	0,5	20	4,0	0,1	Time the temporary text of DRAG- CATCH-BRAKE should be shown in display after last pushed +/- button.
DRAG CATCH BRAKE Showtime XX.X	0,5	20	4,0	0,1	Voltage of the boat supplies battery. Measured inside the machine at the junction terminals.
INFORMATION Voltage(V) XX.X	0,5	20	4,0	0,1	The temperature inside the machine. Shall normally not exceed outside temperature + 25°C.
INFORMATION Temp (°C) XX.X	0,5	20	4,0	0,1	Humidity inside the box. Normally less then 50%. If exceeded turn off

Pictures	Min	Max	Fact.	Step	Notes
LINE OUTE: XXX < XX	0	999	20	1	Normal display. Shos line out.
Fish methode XXXXXXXXXXXXXXXXXX	0	999	10	1	Select fishing depth to fish at.
Depth XXX	0	999	10	1	Select jigging length
Jig XXX	1	100	2	1	Step jig length is a step section of a jig length
STEP JIG PROGRAM Step Length XX	0,5	10,0	2,0	0,1	Pause between two step jig
STEP JIG PROGRAM Step Pause XX.X	0,5	10,0	2,0	0,1	If wheel turns slower than this time, bottom is detected.
BOTTOM PROG Detect time XX.X	0	20	2	1	Decide the working distance from bottom
BOTTOM PROG Bottom dist XX	0	20	10	1	Number of jigs between bottom detecting
BOTTOM PROG No jigs XX	1	999	999	1	Max allowed depth during bottom fishing. If more line is reeled out (e.g. by strong current or wind) the machine hauls in as much as "Haul" (next function) is set.
BOTTOM PROG Max depth XXX	1	100	50	1	"Hauling length" in % of "Max depth" selected in bottom program.
BOTTOM PROG Haul XX%	1	25	2	1	"Hauling length" in % of "Max depth" selected in bottom program.
SQUID PROGRAM Depth reduc. XX	0	999	5	1	Fishing depth after depth reduction in Squid Fish Program
SQUID PROGRAM Min depth XXX	50	160	120	1	Speed 1 on motor when simulating square wheel. See page 8.
SQUID PROGRAM Speed 1 XXX	0,1	2,0	0,5	0,1	Time for Speed 1.
SQUID PROGRAM Speed 1 time x.x	50	160	120	1	Speed 2 on motor when simulating square wheel.
SQUID PROGRAM Speed 2 XXX	0,1	2,0	0,3	0,1	Time for Speed 2.
SQUID PROGRAM Speed 2 time x.x	0,1	2,0	0,3	0,1	Time for Speed 2.
					Main menu appears when the ζ - button is pressed in normal mode

Pictures	Min	Max	Fact.	Step	Notes
MOTOR PAUSE CATC WHEEL BRAKE MORE	Out	5,0	1,0	0,1	Acceleration time to jig speed.
JIG CATCH HAUL MANU. L.MESS RET	50	160	150	1	Speed of wheel during fishing. RPM.
SOFT START TO Jig Speed XX.X	50	160	50	1	Speed immediately after catch is detected
Speed at jig XXX	Out	10,0	Ut	0,1	Time motor is running at CATCH SPEED.
Speed at Catch XXX	Out	10,0	3,0	0,1	Acceleration to haul speed.
CATCH SPEED Time X.X	50	160	150	1	Speed to haul up the catch to surface.
Soft start to Haul Speed XX.X	Out	10,0	1,0	0,1	Acceleration at manual taking up.
Speed at Haul XXX	50	160	150	1	Speed during manual taking up.
Soft start to Manual Speed X.X	Out	160	Out	1	Speed during taking up mess.
Speed at Manual Up XXX	0,0	20	3,5	0,1	Value of motor current has to be below to detect mess.
SPEED AT Line mess XXX	1	50	10	0,1	The time the motor current has to be below "Value for Line mess".
Value for Line mess. X.XA	0	999	5	1	Length of the jig stroke must be pulled before mess can be detected.
Detect time for Line mess. XX.Xs	0,5	10,0	0,5	0,1	Time machine will wait before it starts fishing after START button is pressed. (Selection from MAIN MENU 1.)
Distance for Line mess. XX	0,5	25,0	2,0	0,1	Pause after selected depth is reached before any jig stroke starts.
PAUSES Auto XX.X	0,1	10,0	1,0	0,1	Time the weight of catch has to override selected catch for sensing.
PAUSES Depth pause X.X	1,0	25,0	Ut	0,1	Catch is detected if one turn of the wheel takes longer time then this time.
CATCH Time up XX.X					<i>Not in use in Bottom and Squid Programs</i>
CATCH Time down XX.X					
	0	60	1	1	Number of flashes in a group.

Pictures	Min	Max	Fact.	Step	Notes
CATCH BLINK No XX	0	100	100	1	Brightness in %.
CATCH BLINK Pause XX.Xs					Appears when "WHEEL" is selected from the MAIN MENU.
CATCH BLINK Brightness XXX%	1	999	80	1	Inside width of the wheel. Were the line is kept.
DIM LINE COUNTER STOP-P PV RET	1,0	5,0	1,4	0,1	Diameter of actual used line in millimeter.
WHEEL Width XXX	130	400	170	1	Diameter of outer turn of line on the wheel. See pge 4.
LINE Line diam. X.X					Fathoms Select from: Meter - Fathoms - Feet
LINE Outer diam. XXX					Normal / Reverse If the haul direction of the wheel is changed, the depth counter direction also must be changed. See page 4.
LINE COUNTER Unit XXXXX					Control of counter sensors.
LINE COUNTER Direction XXX					Menu which appears when STOP-P is chosen.
Wheel count A B 0000 1 1	OUT	IN	IN	IN	Machine stop when counter comes to zero.
ZERO SEA PULLEY SOFTS. RET	1,0	99,9	30,0	0,1	Maximum run time for the motor if the wheel do not turn. (Line stuck).
Stop at 0 ? XXX	OUT	99,0	OUT	0,1	Maximum run time for the motor if the line is stuck in the pulley.
STOP IN WATER Time XX.X	150	20	1	20	Only above this depth stop in pulley is enabled.
STOP IN PULLEY Time XX.X	0,1	60,0	OUT	0,1	Delayed restart after stop in pulley occurred.
STOP IN PULLEY Above depth XXX	OUT	IN	OUT	OUT	Automatic zero set of counter when "Restart" (above) is chosen.
STOP IN PULLEY Restart XX.X	OUT	99	8	1	If "Stop at zero" is used, the machine can decrease the speed from this point.
STOP IN PULLEY Auto zero XXX					Measured in number of turns of the wheel.
Soft stop at 0 in auto XX	OUT	99	OUT	1	Same as in auto.